

TOKUI, Yoshiko

Cultural Sciences Division / Department of Life Studies, Cultural Historical Studies Course

<http://www.aesthe.ocha.ac.jp/profs/tokui/>

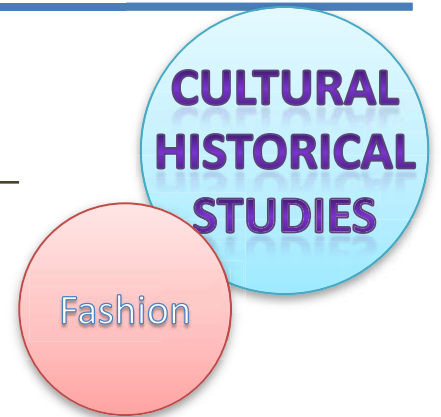
■ Researcher information

Contact

Email: tokui.yoshiko@ocha.ac.jp / TEL: 03-5978-5802

Major

Cultural Study of Clothes



■ Research topics

The historical study of sensibilities through the European phenomenon of fashion

Keywords

History of Costume, Sensibility of Color, Pattern and Device, Exoticism

Contents

■ Overview (background, goal, detail)

Specializes in history of European dress or history of mentality as seen in the culture of clothes, using especially literature and iconographies such as paintings, illustrations and fashion plates. Aims to clarify the emotional life and sensibility of Europeans through the analysis of social and cultural functions of clothing, and show the cultural wealth of the phenomenon of fashion.

■ Process, case study

■ Potential (applications, future goals)

Research projects include : (1) symbolic meaning of the French medieval fashion, mainly symbolism of colors in daily life and significance of patterns relative to device and literature in the late medieval era; (2) masquerade, cross dressing and historic costume in the Romantic Medievalism, and mutual relationship between fashion, theatre, paintings and literature during the French Romantic era.

Intellectual properties (Patents, computer programs), productization, publications and social/industrial contributions

Publications: *History of European clothes*(2010), *Medieval Europe as seen in the culture of colors*(2006), *Medieval mode*(1995)
Lectures : Symbolism of Color in Europe; European Mode in Paintings and Portraits; Jewelry and Talisman; Manuscripts in Medieval Europe.

Potential of social/industrial contribution

■ Joint research/ licensing / technical consulting / knowledge sharing (open courses, workshops, publications)